

TABLE OF CONTENTS

CUSTOMER MESSAGE	Inside Front Cover
SAFETY PRECAUTIONS	3
GENERAL DESCRIPTION	6
SPECIFICATIONS	7
MAINTENANCE	8
OPERATION	9
CUTTING SPEEDS	11
TOOL BITS	12
TROUBLE SHOOTING	13
ILLUSTRATED PARTS BREAKDOWN	15
TOOL BIT RESHARPENING POLICY	Inside Back Cover
WARRANTY INFORMATION	Inside Back Cover

Copyright 2006
Proprietary property of TRI TOOL Inc.
No reproduction, use, or duplication of the information
shown hereon is permitted without the express written
consent of TRI TOOL Inc.

SAFETY PRECAUTIONS

IN GENERAL

When using rotating head cutting equipment, basic safety precautions should always be followed to reduce the risk of personal injury.

Operate this tool only in accordance with specific operating instructions.

WARNING: Do not override the deadman switch on the power unit. Locking down, obstructing, or in any way defeating the deadman switch on the power drive unit may result in serious injury.

DRESS CONSIDERATIONS

Use standard safety equipment. Hard hats, safety shoes, safety harnesses, protective clothes, and other safety devices should always be used when appropriate.

Use safety glasses. Do not operate cutting tools without eye protection.

Dress properly. Do not wear loose clothing or jewelry. They can be caught in rotating and moving parts. Avoid slippery floors or wear nonskid footwear. If you have long hair, wear protective hair covering to contain it.

WORK AREA

Keep the work area clean. Cluttered work areas and benches invite injuries.

Consider the work area environment. Keep the area well lit. Keep electrical cords, cables, rags, rigging straps, etc. clear of rotating equipment. Do not use power-cutting tools in the presence of flammable liquids and gasses.

Keep visitors away. Do not let visitors or untrained personnel at or near operating tools. Enforce eye protection requirements for all observers.

Do not over reach. Keep proper footing at all times.

Stay alert. Watch what you are doing. Use common sense. Do not operate tools when you are tired.

TOOL CARE

Maintain tools with care. Keep tools in good operating condition. Sharp tool bits perform better and safer than dull tool bits. Well maintained tools function properly when needed.

Check for damaged parts. If a tool has malfunctioned, been dropped or hit, it must be checked for damage. Run no-load tests and feed function checks. Do a complete visual inspection.

Electric motors. Use only with proper AC voltage power sources and observe all normal electric shock hazard procedures.

Do not abuse power and control cords. Pulling or running over cords and cables can result in electrical shock hazards and malfunctions. Keep control and power cords out of all cutting fluids and water.

Hydraulic drives. Observe proper procedures for electrically driven power sources. Avoid damage to hydraulic lines. Keep quick-disconnects clean. Grit contamination causes malfunctions.

Air tools. Check the exhaust muffler. Broken or damaged mufflers can restrict air flow or cause excessive noise. Use air motors only with a filtered, lubricated and regulated air supply. Dirty air, low-pressure air or over pressure air will cause malfunctions, including delayed starting.

AREA EQUIPMENT

Secure work. Whenever possible use clamps, vises, chains and straps to secure pipe.

Make sure the tool is secured; it is safer to have both hands free to operate the tool.

TOOL USE

Use the right tool and tool bit for the job. Do not use a tool, which is incorrect for the job you are doing.

Keep the tool bits fully engaged in the tool bit holders. Loose bits are a safety hazard.

Disconnect power supply during setup and maintenance. Use all 'Stop' or Shut off' features available when changing or adjusting tool bits, maintaining the tool, or when the tool is not in use.

Remove adjusting keys and wrenches before applying power to the equipment. Develop a habit of checking the tool before turning it on to make sure that all keys and wrenches have been removed.

Do not force tools. Tools and tool bits function better and safer when used at the feed and speed rate for which they were designed.

Do not reach into rotating equipment. Do not reach into the rotating head stock to clear chips, to make adjustments, or to check surface finish. A machine designed to cut steel will not stop for a hand or an arm.

Handle chips with care. Chips have very sharp edges and are hot. Do not try to pull chips apart with your hands; they are very tough.

Avoid unintentional starts. Do not carry or handle tools with your hand on the operating switches or levers. Do not lay the tool down in a manner that will start the drive. Do not allow the tool to flip around or move when adjusting or changing tool bits.

Store idle tools properly. Disconnect tools from the power source and store in a safe place. Remove tool bits for safe handling of the tool.

GENERAL DESCRIPTION

The SQM-2AC Squaring Module Kit is designed to fit on the Headstock of the Model 576AC SEVERMASTER™.

The Model SQM-2AC is an accessory to square the end of pipe and/or tube.

The tool bracket incorporates a pivot post that allows the Squaring Module to be “parked” over the cutting face during a severing operation.

This allows one standard tool module and one Squaring Module to be mounted simultaneously on the Headstock.

After a sever is complete, the Squaring Module may be pivoted into position for performing a burr free end squaring operation.

A manual feed allows the operator to control the depth of the cut for the end squaring operation.

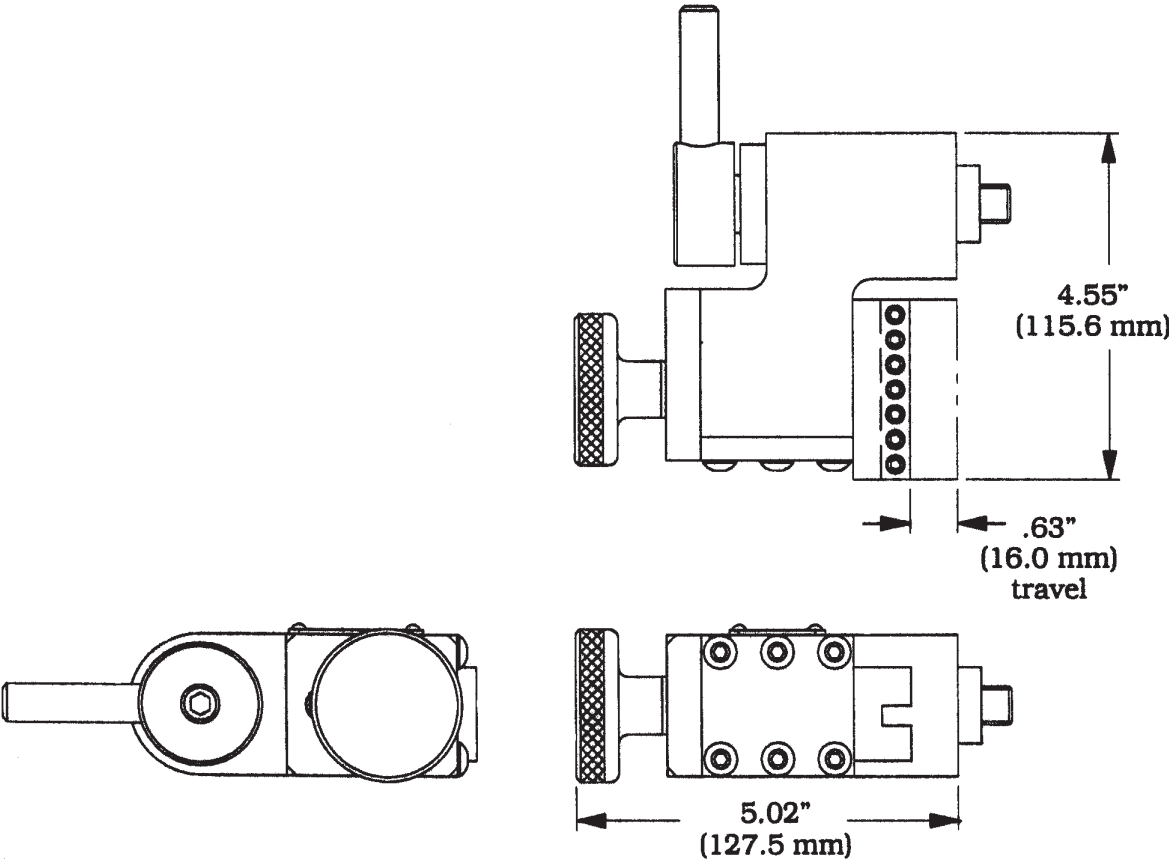
The Squaring module uses standard tube squaring tool bits.

SPECIFICATIONS

Model SQM-2AC, Squaring Module

Weight: 5.4 lbs. (2.5 kg)

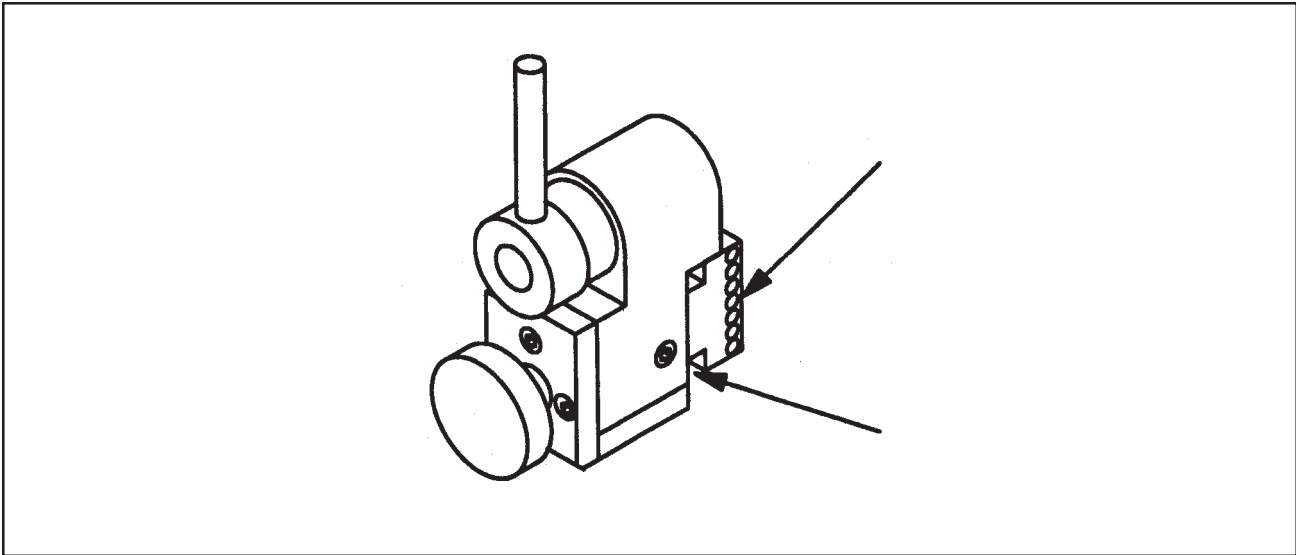
Envelope, Model SQM-2AC, Squaring Module



MAINTENANCE

All components should be cleaned and coated with a light film of oil prior to use.

Use a clean, non-detergent oil, preferably SAE 10 (90 SSU) or lighter.



If the Model SQM-2AC is operated in such a manner that it collects debris while cutting, it should be cleaned after each cutting operation.

WARNING:

Tool life may be severely shortened, unless chips and/or other debris that have been deposited on the cutting head during the machining operation are removed.

RECOMMENDED MAINTENANCE SCHEDULE

Daily maintenance when the unit is in operation include a visual inspection of loose screws, missing screws, damage, etc.

Wipe the unit down and spray with rust preventative under severe humidity conditions.

STORAGE

If the Model SQM-2AC is to be stored or if it will remain out of service for a significant period of time (30 days or more), it should be thoroughly cleaned, lubricated and sprayed with a rust preventative prior to storage.

OPERATION

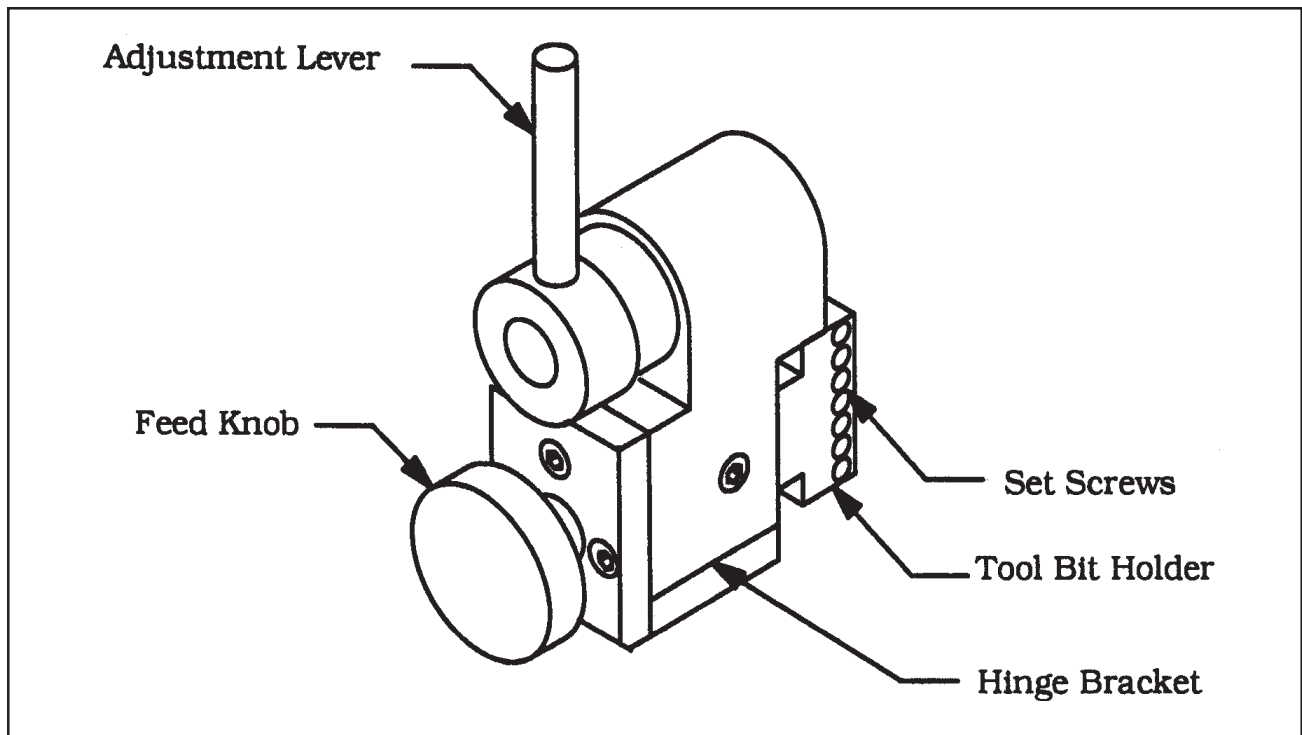
IN GENERAL

Read the operating instructions carefully before attempting to operate the Model SQM-2AC Squaring Module.

Refer to the Operator's Manual for operating instructions for the Model 576AC SEVERMASTER™.

WARNING: The use of dull or improperly designed tool bits or tool bits not manufactured by TRI TOOL Inc. may result in poor performance and may constitute abuse of this machine and therefore voids the TRI TOOL Inc. factory warranty.

INSTALLATION



The hinge bracket is in the raised position while the other tool module performs the severing operation.

Loosen the hinge bracket by rotating the adjustment lever.

Swing the hinge bracket down into the vertical position.

Tighten the hinge bracket by rotating the adjustment lever.

Move the tool bit to the proper position for the diameter of pipe to be machined.

Loosen the (7) set screws to let the tool bit slide.

Slide the tool bit into the desired position.

Tighten the (7) set screw to secure the tool bit.

MACHINING SEQUENCE

Turn the Model 576AC on and let it rotate slowly while ensuring that the tool bit is not making contact with the end of the pipe.

Bring the motor up to speed.

Turn the feed knob to feed the tool bit into the end of the pipe.

After the face of the pipe has been machined let the tool bit make three more rotations without feeding to clean up the face.

Back the tool bit off of the pipe by turning the feed knob.

Turn off the motor.

CUTTING SPEEDS

Cutting Speeds (approximate)					
Mean Cutting Diameter		RPM for 200 in/min (5080 mm/min)	RPM for 250 in/min (6350 mm/min)	RPM for 300 in/min (7620 mm/min)	
1.50"	38 mm	42	53	64	
2.00"	51 mm	32	40	48	
3.00"	76 mm	21	27	32	
4.00"	102 mm	16	20	24	
4.50"	114 mm	14	18	21	

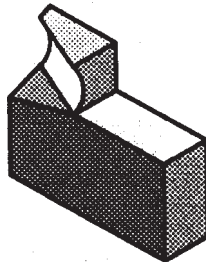
Use 200 surface inches per minute (5080 surface millimeters per minute) for: Stainless steels in general when no coolant is allowed, all heavy wall tube and some of the chrome/molybdenum steels.

Use 250 surface inches per minute (6350 surface millimeters per minute) for: Mild steels and some thin wall stainless steels when coolants are permitted and applied.

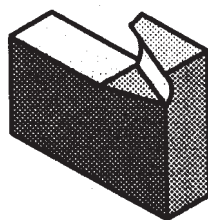
Use 300 surface inches per minute (7620 surface millimeters per minute) for: Aluminum and thin-wall mild steel tube with coolants.

TOOL BITS

99-1506 Tool Bit
DURABIT 1^â



99-2490 Tool Bit



TROUBLE SHOOTING

Problem: The Tool Bit Chatters

Probable causes:

- The tool bit is loose or overextended.
- The tool bit is damaged.
- The tool holder is too loose in the slides.
- The cutting speed is too fast.
- The clamping pads are loose on the pipe or tube.
- Cutting fluid is required.
- The main bearing pre-load is loose.

Problem: There is excessive Tool Bit wear

Probable causes:

- The pipe or tube material is too hard or abrasive.
- The cutting speed is too fast.
- Cutting fluid is required.
- A dull Tool Bit is causing surface hardening conditions (Stainless pipe or tubing).
- There is scale or other foreign matter on the pipe or tube, which is dulling the tool bit at the start of the cut.
- The tool bit is incorrect for the material being cut.

Problem: The surface finish is rough

Probable causes:

- The tool bit is dull, chipped, etc.
- Metal build-up on the cutting edge of the tool bit is creating a false cutting edge.
- Cutting fluid is required.
- The cutting speed is incorrect.

Problem: The tool holder is not feeding

Probable causes:

- The feed pin is broken or out of position.
- The feed sprocket shear pin is broken.
- The feed screw is stripped.
- The feed nut is stripped.
- The slide rails are too tight.

Problem: There is a loss of air power

Probable causes:

- The air supply pressure is too low.
- The air filter is plugged.
- The air line size is insufficient.
- The air line is too long.

Problem: There is a loss of hydraulic power

Probable causes:

- The hydraulic supply pressure is too low.
- The hydraulic filter is plugged.
- The hydraulic line size is insufficient.
- The hydraulic line is too long.

Problem: The tool bit will not reach the work

Probable causes:

- Incorrect tool blocks are installed for the size of the pipe or tube being worked on.
- Incorrect tool bit is installed.

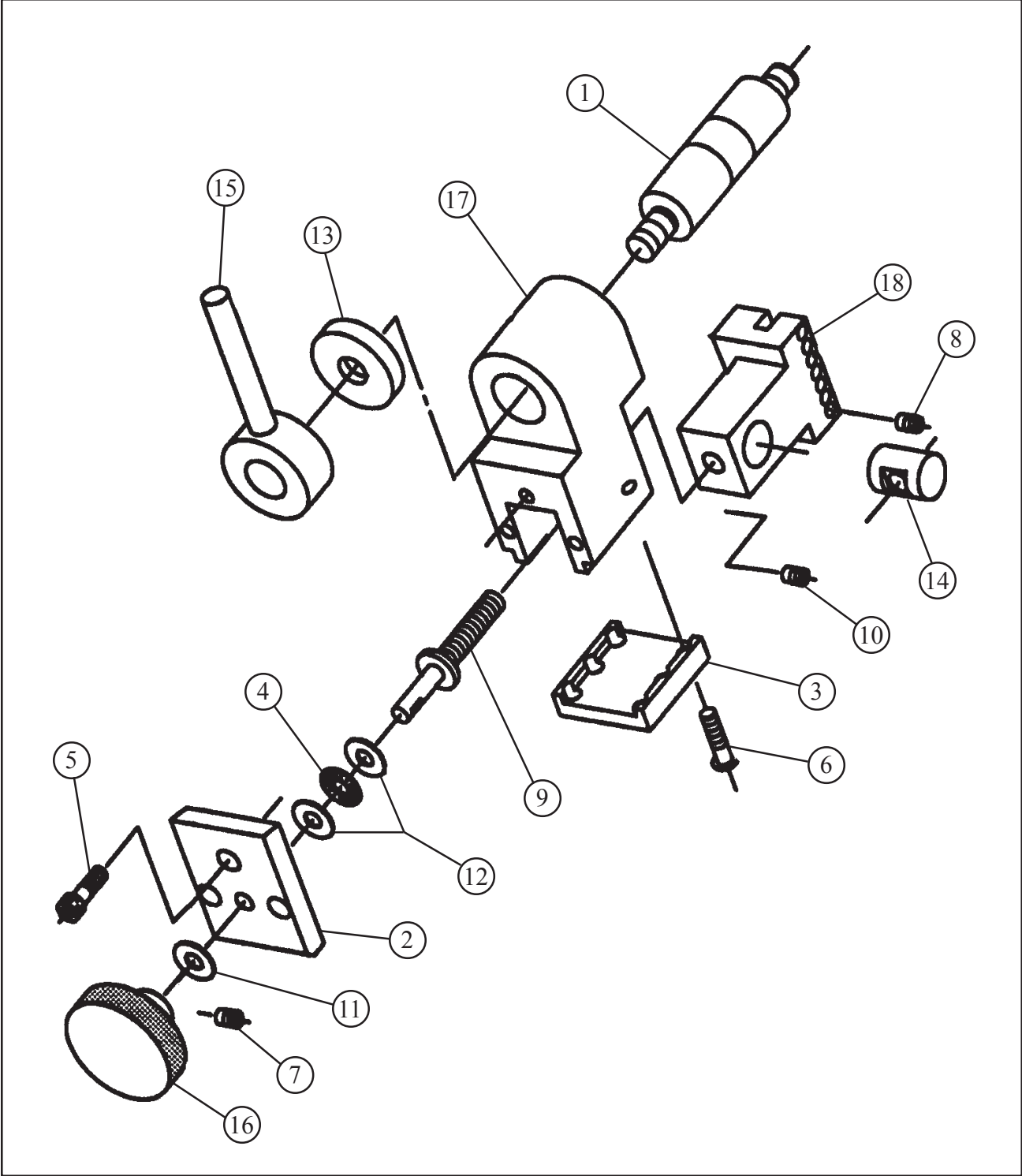
Problem: The hydraulic motor will not start

Probable causes:

- The hydraulic power supply is shut off.
- The hydraulic motor is damaged and will not run free.

ILLUSTRATED PARTS BREAKDOWN

SQUARING MODULE ASSEMBLY



TRI TOOL INC.

Parts List, Squaring Module Assembly (P/N 82-0126)

Item No.	Part No.	Description	Qty
1.	14-0082	SHAFT ASSY, PIVOT	1
2.	24-1047	PLATE, TOP	1
3.	24-1084	PLATE, COVER	1
4.	29-0190	BEARING, THRUST	1
5.	33-0039	SCREW, CAP, 1/4-20 X 5/8"	3
6.	33-0287	SCREW, BUTTON, 1/4-20 X 3/4"	6
7.	33-0499	SCREW, SET, 1/4-20 X 1/4", CUP PT	1
8.	33-0503	SCREW, SET, 1/4-20 X 1/2", CUP PT	7
9.	33-1698	SCREW, FEED	1
10.	33-1735	SCREW, SET, 3/8-16 X 1/4", BRASS TIP	1
11.	34-0108	WASHER, THRUST	1
12.	34-0202	WASHER, THRUST	2
13.	34-0258	WASHER, THRUST	1
14.	35-0345	NUT, FEED	1
15.	41-0148	LEVER ASSY, ADJUSTMENT	1
16.	42-0099	KNOB, FEED	1
17.	47-1184	BRACKET, HINGE	1
18.	49-0216	HOLDER, TOOL	1
NOT SHOWN:			
	33-0995	SCREW, DRIVE, 2 X 3/16"	4
	36-0018	WRENCH, T, 1/8" HEX	1
	36-0146	WRENCH, COMBINATION, 13/16"	1